

Before printing

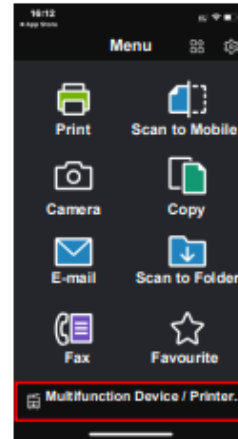


OR

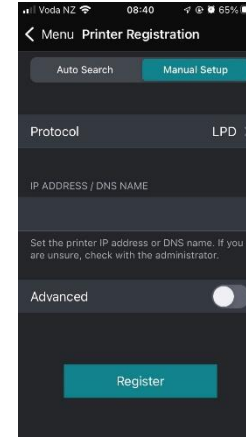


Download [**Print Utility v3**]
in **Download on the App Store**

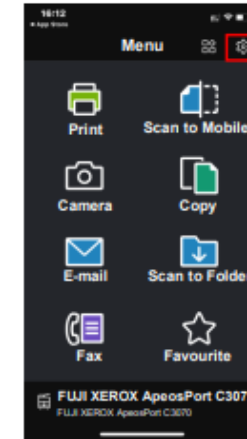
Download [**Print Utility v3**]
in **ANDROID APP ON Google Play**



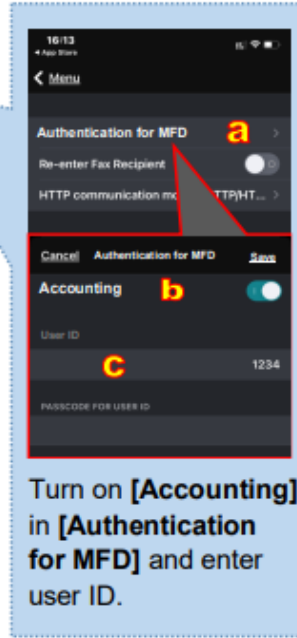
Select [**Multifunction Device / Printer**] to add a device / printer.



Input printers I.P Address [To locate your printers I.P Address press the machine status button on the printer console] and tap the register button

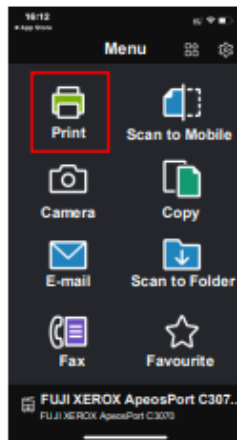


Ready to print.
Remark :
If Authentication is enabled , press to enter user ID before print.

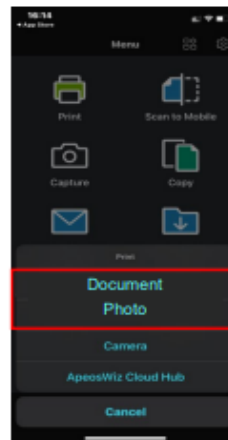


Turn on [**Accounting**] in [**Authentication for MFD**] and enter user ID.

Ready to Print



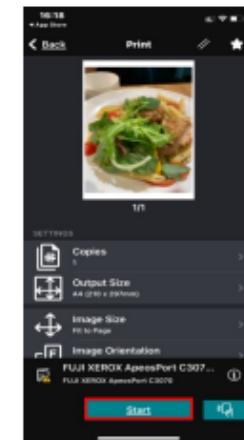
Open and press [**Print**].



Choose [**Document / Photo**] .
Support format : PDF, TIFF, JPEG, XDW

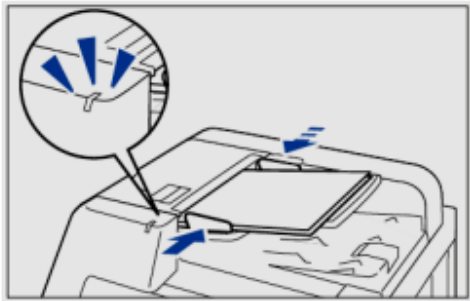


Press [**Settings**] after selecting print file.



Select appropriate print settings and press [**Start**] .

Ready to Scan

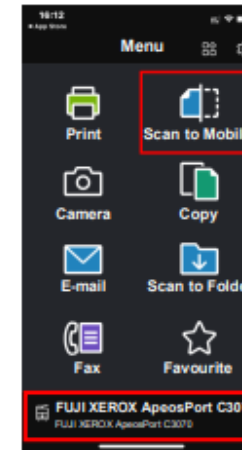


OR

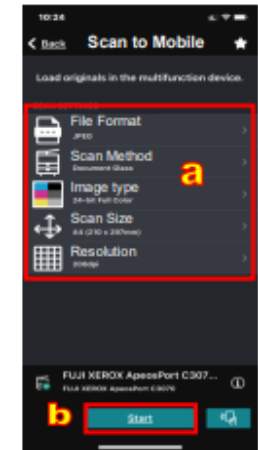


Put scan document into Auto Document Feeder.

Put scan document onto the platen .



Open and confirm device is connected, then press **[Scan to Mobile]**.



Select appropriate scan features and press **[Start]** .

After Scan



Press to choose appropriate save location.



Four alternatives available for saving scanned image.

- Save to Cloud
- E-mail as an attachment
- Save to Photo Album for JPEG
- Open by other application for PDF

